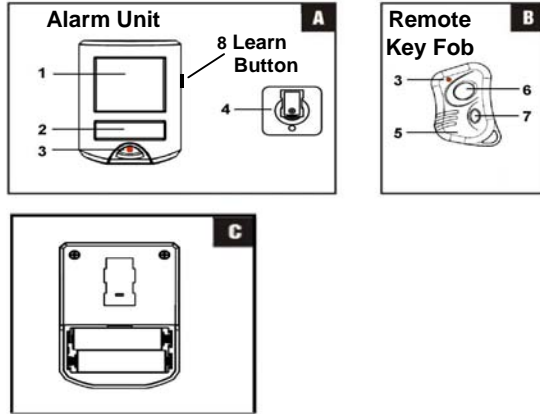


INSTRUCTION MANUAL Alarm – MODEL EA500

Motion Sensor Alarm with RF Remote Control

Controls

- | | |
|------------------------------|----------------------------|
| 1. Motion sensor | 5. RF remote key fob |
| 2. Alarm speaker | 6. RF key fob 'On' button |
| 3. Battery low indicator | 7. RF key fob 'Off' button |
| 4. Rotary wall mount bracket | 8. Learn Button |



Battery installation

Alarm Unit

- The battery compartment is accessed from the rear of the alarm unit by removing the back cover.
- Insert two (2) 'AA' size batteries (not included) following the polarity indicated on the unit **C**.
- When the last battery is inserted the alarm will beep very loudly to indicate that the batteries are installed properly.

Note: If no beep sounds, it means the batteries are not installed properly.

- Replace the back cover again.

Coding the remote key fob to the motion sensor alarm

- After batteries are installed in the motion sensor, **press the 'Learn' button** and then **press and hold** the 'On' button of the RF remote control within 60 seconds for the alarm to learn the Key fob code. The alarm will beep 2 times when set. The alarm is ready to use after 60 seconds.

Note: The alarm unit will need to relearn the remote code every time the batteries are replaced in either the unit or remote.

The main unit can operate with up to 3 Key Fobs.

If more than one Key fob is used, remove batteries in the motion detectors and learn all key fobs again (as above) within 60 seconds after inserting battery. Additional alarm units can also be coded to the remote key fobs using the same procedure.

Low battery

The Battery Low LED will light when the batteries need to be replaced in the Motion detector.

The key fob uses 1 piece A27 battery (included). If the low battery indicator is 'On', simply remove and replace with fresh battery.

Setting the alarm

Simply press 'On' or 'Off' button of RF key fob to arm or disarm the unit.

Installation

- Place the alarm in the desired location, using rotary wall mount bracket provided.
- Fix bracket to the wall using the screws supplied.

Note: This alarm can also be used free standing and is for internal use only.

Operation

When exiting from the protected area

Press the 'On' button of RF remote control at a distance within 10 meters; a confirmation tone will indicate that the alarm is armed and you have 30 seconds in which to vacate the area. After this time, if motion is detected then the alarm will sound.

When entering the protected area

Simply press the 'Off' button of the RF remote control within the distance of 10 meters to disarm the unit. **Note:** On entering the motion sensor detection area there is a short beep to indicate that motion has been detected and there is a 4 second delay before the alarm will sound to allow it to be disarmed.

Detection range

The motion detector of the alarm unit has a range up to 7 meters with approximate angles of 30° vertical and 60° horizontal. Trial different positions to check area covered. To get maximum area coverage position in corner of room.

Care and maintenance

To clean the case, simply use a soft slightly damp cloth with water and wipe dry immediately.

CAUTION: Never use chemicals to clean the case, as they may cause damage to the plastic and cause the alarm not to function.

Troubleshooting

The unit does not sound when the batteries are installed

Ensure that the batteries are connected correctly according to the diagram in the battery compartment.

The alarm does not arm

Ensure that the back plate of the alarm unit is secured to hold the batteries in place and that the red light comes on when the 'ARM' or 'DISARM' buttons are pressed.

The red light on the base of the alarm is on

This is an indicator of 'Low Battery', which means the batteries need replacing.

The red light on the key fob does not light up when the buttons are pressed

Remove the battery cover of the key fob and replace the battery.

Battery precautions

When using this product follow these precautions at all times.

- Use only the appropriate size batteries
- Be sure to follow the correct polarity when installing the batteries as indicated in the battery compartment. Incorrect polarity may cause damage to the alarm.
- Do not mix different types of battery such as Alkaline and Carbon-zinc or old batteries with new.
- If the alarm is not used for long periods of time, remove the batteries to prevent damage or injury from possible battery leakage.
- Do not recharge batteries not intended to be recharged as they can overheat and rupture. (Always follow the manufacturer's directions).