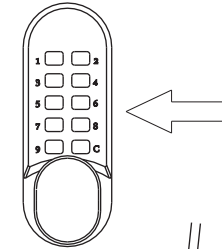


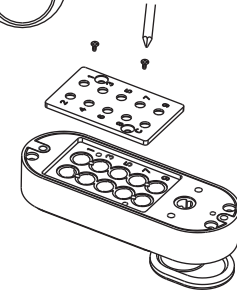
How to change your code:

- 1 Remove the door lock from the door by unscrewing the two fixing screws
- 2 Place the lock on a flat surface, facing down. Familiarise the workings of the lock body before removing the panel. (Press button 'C' and then enter the code corresponding to the red tumblers. The door knob will then turn)



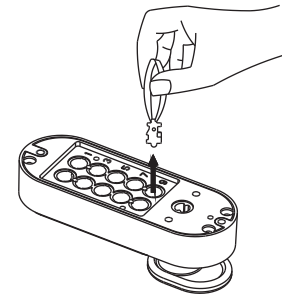
- 3 Remove the rear panel by undoing the two red screws

Take care to avoid the springs falling off the underside of the panel when removing



- 4 You will see there are 4 red coloured code tumblers, 5 blue non-code tumblers and 1 clear 'C' tumbler

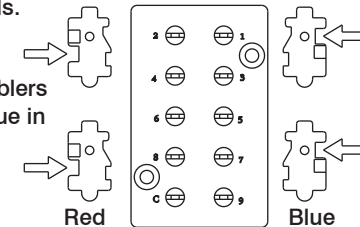
- 5 To change the code press and hold button 'C' and remove the red and blue tumblers using the forceps.



DO NOT REMOVE THE 'C' TUMBLER

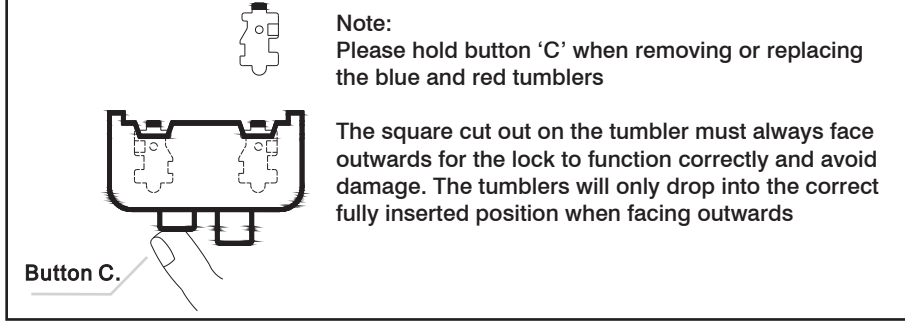
Please note there is a difference between the red and blue tumblers. The shapes are slightly different. When refitting the tumblers into the lock body, they must be fitted facing the right way. The square cut needs to face outwards. (see illustrations)

- 6 Replace all the tumblers with the 4 red tumblers in the position for the new code and the blue in the rest of the holes



Warning: If using the template it is important this has been printed to scale and the measurements checked before and drilling!

How to change your code:

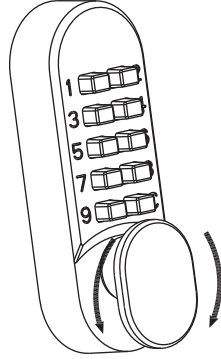
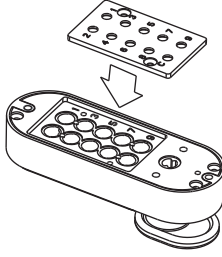
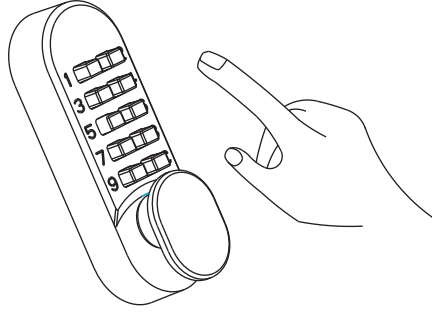


7 Ensure all springs are positioned within the panel before securing with the red screws. Check the lock functions correctly. (see item 2)

8 Confirm the correct handing of the door (see reverse) before fixing to door

Install the lock on the door with the fixing bolts. Refer to installation instructions, see reverse, for the correct positioning of the sprung spindle.

9 Ensure lock functions correctly before closing the door



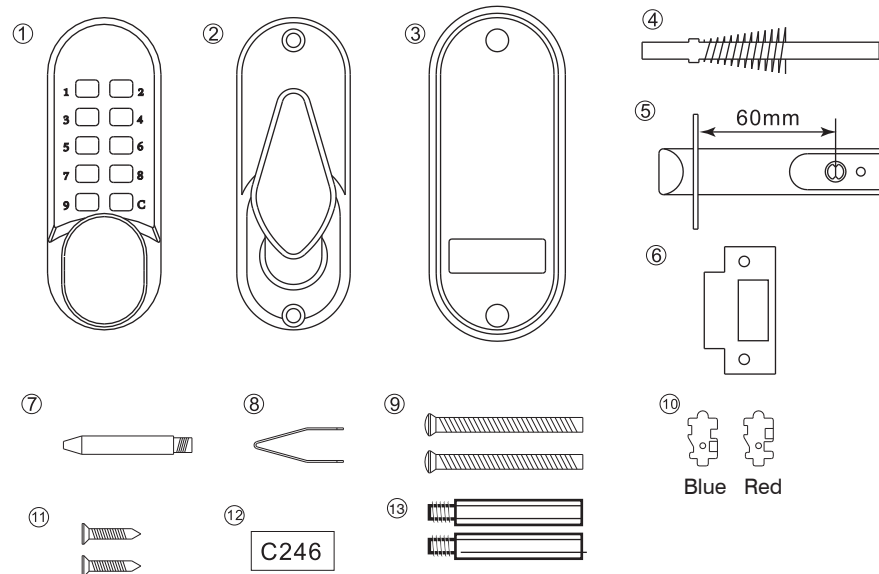
Trouble Shooting Guide

Problem	Cause	Solution
The latch cannot be withdrawn when entering the code	The lock has been fitted to a left hand hung door	All locks are factory set to suit right handed doors. The lock needs to be removed from the door and reversed. Refer to instructions
Both inside and outside knobs retract when turned towards the door frame	The spindle is in position at the wrong angle	Remove the lock from the door and re-position the spindle as shown in the instructions
The knob will not turn after entering a new code	One or more of the code tumblers are the wrong way around	Refer to instructions and check the red tumblers are all facing with the square notches facing outwards
The latch bolt does not move smoothly in and out	The lock is not installed correctly	Check: (A) the lock is square on the door and positioned accurately over the latch. (B) the latch is positioned horizontally and parallel to the door surface. (C) the spindle length, it may be trapped between the front and back plate if the spindle is too long
The outside knob turns after entering a correct code but does not retract latch	The spindle is too short for the door thickness	If the spindle is too short then it will not engage with the outside knob and the inside handle, or it might slip out of one side after some use

Caution when operating

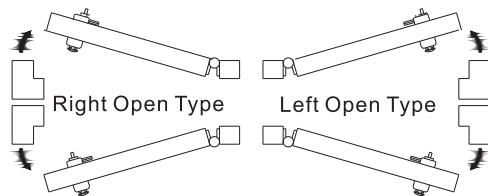
This lock is designed for low traffic areas - excessive use may lead to early failure of components. These components are serviceable items and fall outside of the warranty.
For outward opening doors it is not recommended to use the lock handle as the main method of opening the door. An additional handle should be used.

Parts of door lock:



- | | |
|-------------------------------------|--|
| 1. External lock body | 7. Latch support post |
| 2. Back plate | 8. Forceps to change password |
| 3. Gasket | 9. Fixing bolts (length adjustable) |
| 4. Lock shaft with spring (spindle) | 10. Code tumblers (2 spare) |
| 5. Latch (60mm backset) | 11. Latch & strike plate fixing screws |
| 6. Strike plate | 12. Factory set secret code card |
| | 13. Hexagonal studs for extending fixing bolts |

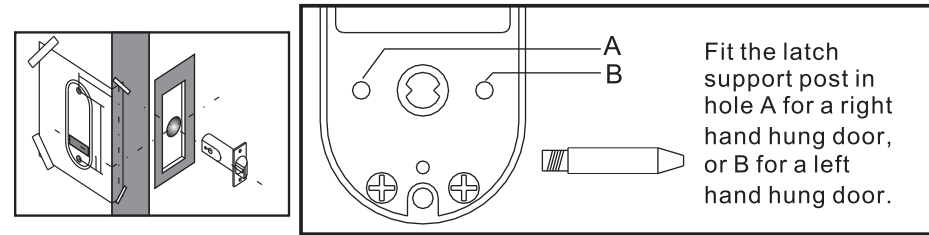
Direction of Door:



Handing of door:

Door is open from right hand side, viewing from the inside part of door, the hinge is at the right side.

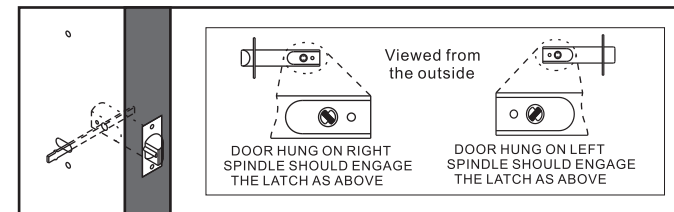
The installation position of parts can be changed if necessary



- Tape the template to the door making sure the fold is along the correct line, depending on the backset of the latch (60mm or 70mm)
- Mark and drill holes as per template

Positioning and fixing the latch

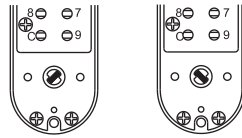
- Mark a central point on the 'centre line of latch' on the door edge.
- Drill a 25mm hole × 85mm deep.
- Insert the latch into the hole, and draw around the face plate.
- Remove the latch and cut a 3mm rebate so that the face plate will fit flush with the door.
- Secure the latch with the wood screws.
- When fitting the backplate to a left-hand door the BLUE screw must go in the righthand hole and visa versa.



- Insert the spindle through the slot in the door and make sure that it engages the latch correctly for the hand of the door -(see inset diagram.)

Installation:

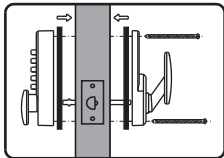
Adjust the length of the spindle, if necessary, according to the thickness of the door. Do not cut too short. The lock is suitable for doors between 35mm - 55mm. The spindle needs to be positioned as per the diagram, depending on the handing of the door.



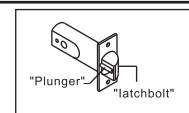
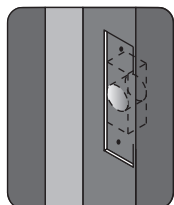
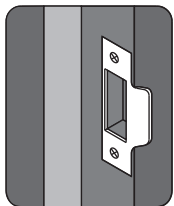
Right-Open Door



Left-Open Door



- Cut the fixing bolts to suit the door thickness, allowing at least one threaded section to screw into the lockcase. Insert the hexagonal studs into the lock body for the fixing bolts to screw in to, if required.
- Hold the lock case and the backplate, with the gaskets, onto the door with the spindle in position.
- Using the fixing bolts screw everything together through the top and bottom holes of the backplate. Before final tightening make sure the lock is vertical, and test the mechanism to ensure that it is all moving easily. **DO NOT CLOSE THE DOOR UNTIL YOU ARE SURE THAT THE CODE WORKS.** **DO NOT** over tighten the fixing bolts as this may cause distortion and lead to poor operation.
- Position the strike plate on the door so that it lines up with the flat of the latchbolt, **NOT THE PLUNGER**.
- Mark the inner and outer edges of the strike plate and cut a 1mm rebate so that it fits flush with the surface of the door frame.
- Drill or cut a recess for the latchbolt.
- Fit the strike plate using only one wood screw at first to ensure that it is positioned accurately. The latch bolt, and not the plunger, should enter the aperture easily, and be held without too much play. once satisfied secure the strike with the second screw.



N.B. The plunger beside the latchbolt deadlocks the latchbolt and protects it against manipulation. **IT MUST NOT** enter the strike plate aperture when

70mm

60mm

Fold along the edge of the door

Outline of rubber seal

Outline of lockcase

8mm Hole

13mm Hole

8mm Hole

8mm Hole

97mm

Centre line of latch

 Sterling